

March 10, 2017

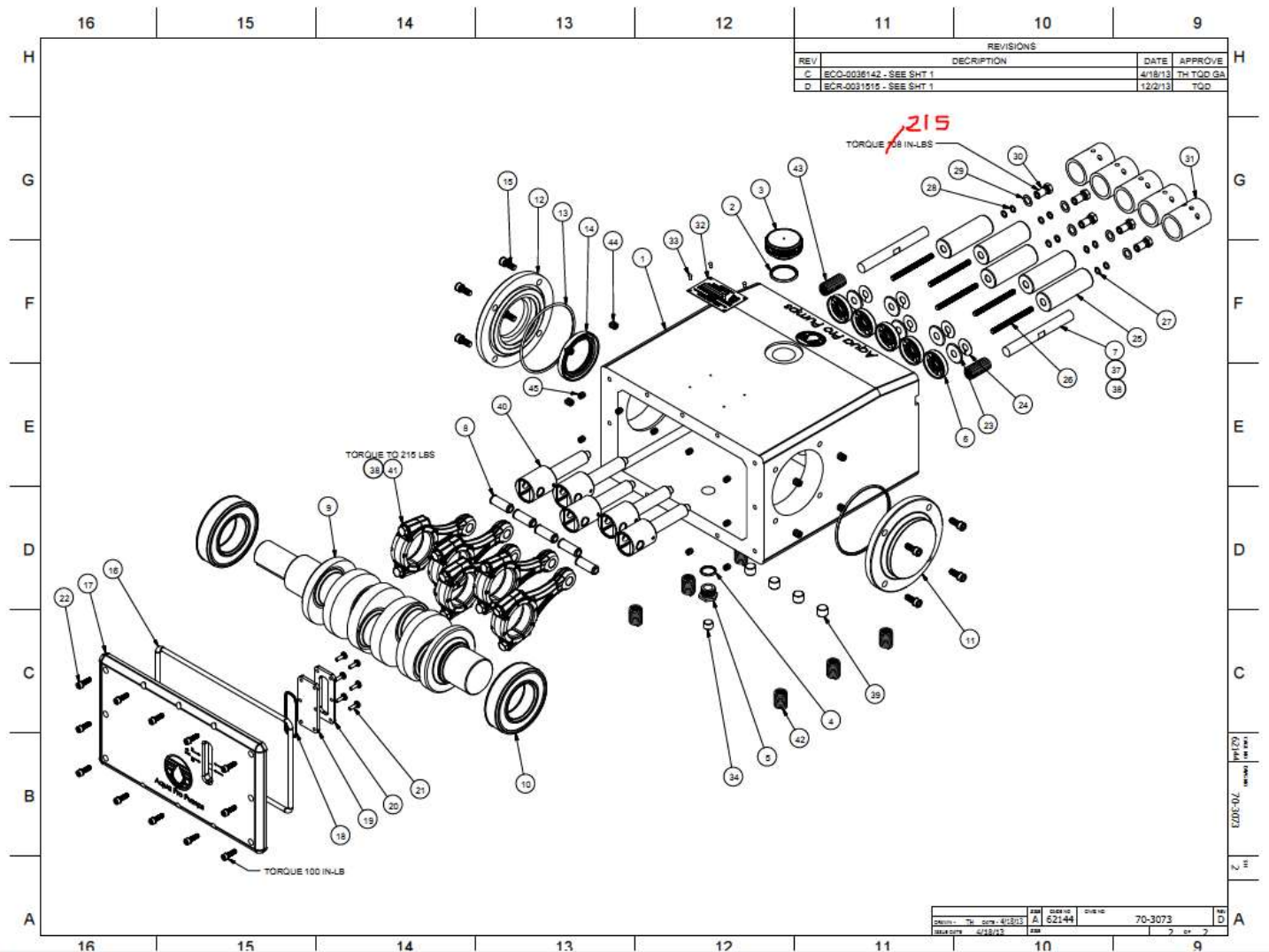
Subject: Change torque value on Plunger Retainer Nut p/n 70-3016 on crankcase s/a(s) 70-3083, 70-3083M, 70-3073, 70-3073L, 70-3073M, 70-3073ML)

UNITS AFFECTED: 3P20 Titan Series, 5P50 Titan Series

CHANGE DESCRIPTION:

In order to secure the ceramic plunger rods and to document the procedure at the pump production line that has been used, the torque on the plunger retainer nut (p/n 70-3016) has been changed from 104 to 215 in-lbs.

Fig. 1: Drawing sample of Crankcase S/A with the change



The affected population of pumps for the commercial division is assumed to be as follows:
 3P20: 70-3083, 70-3083M (Crankcase S/A, 3P20 Series).
 5P50: 70-3073, 70-3073L, 70-3073M, 70-3073ML (Crankcase S/A, 5P50 Series).