

March 10, 2017

**Subject:** 5P50 (early Production) - Snap Ring, 70-0400 eliminated

**Details:**

Effective prior to June 2010 Parker W.P. engineering has made the following changes:

UNITS AFFECTED: 5P50 Titan Series (early production)

This technical bulletin is to document the elimination of part number 70-0400, snap ring from the 5P50 crankcase assembly. The crankcase has been modified with a stepped crankshaft main bearing housing bore. The stepped bore keeps the bearing from moving axially along the bearing bore thus eliminating the need of a snap ring for bearing retention.

Reason for Change: Part and complexity reduction.

**FIG 1**  
"IS" Snap Ring for the crankshaft main bearings is eliminated.

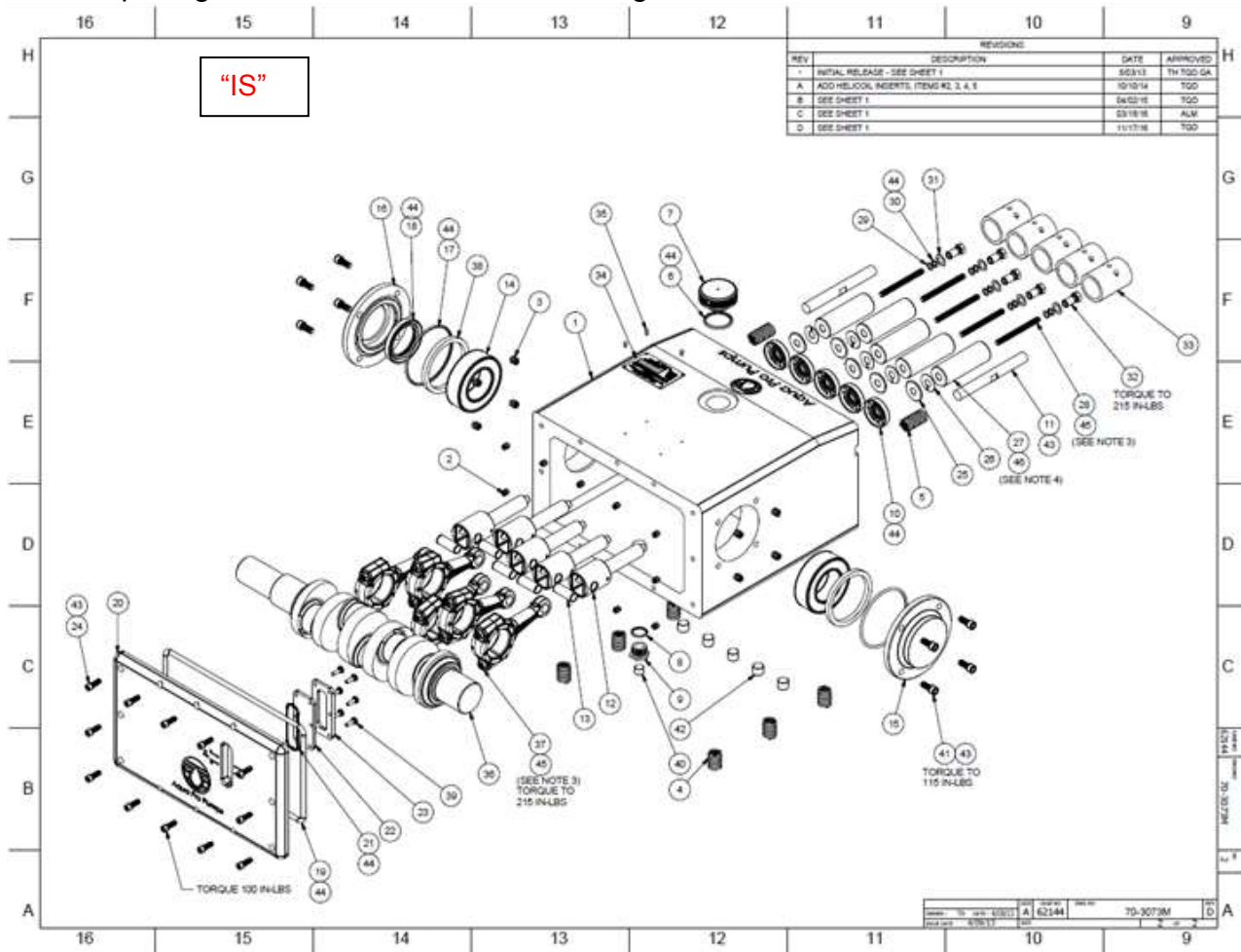


FIG 2

"IS" Cross section view of current crankcase (70-3082M) design showing the step in the main bearing bore.

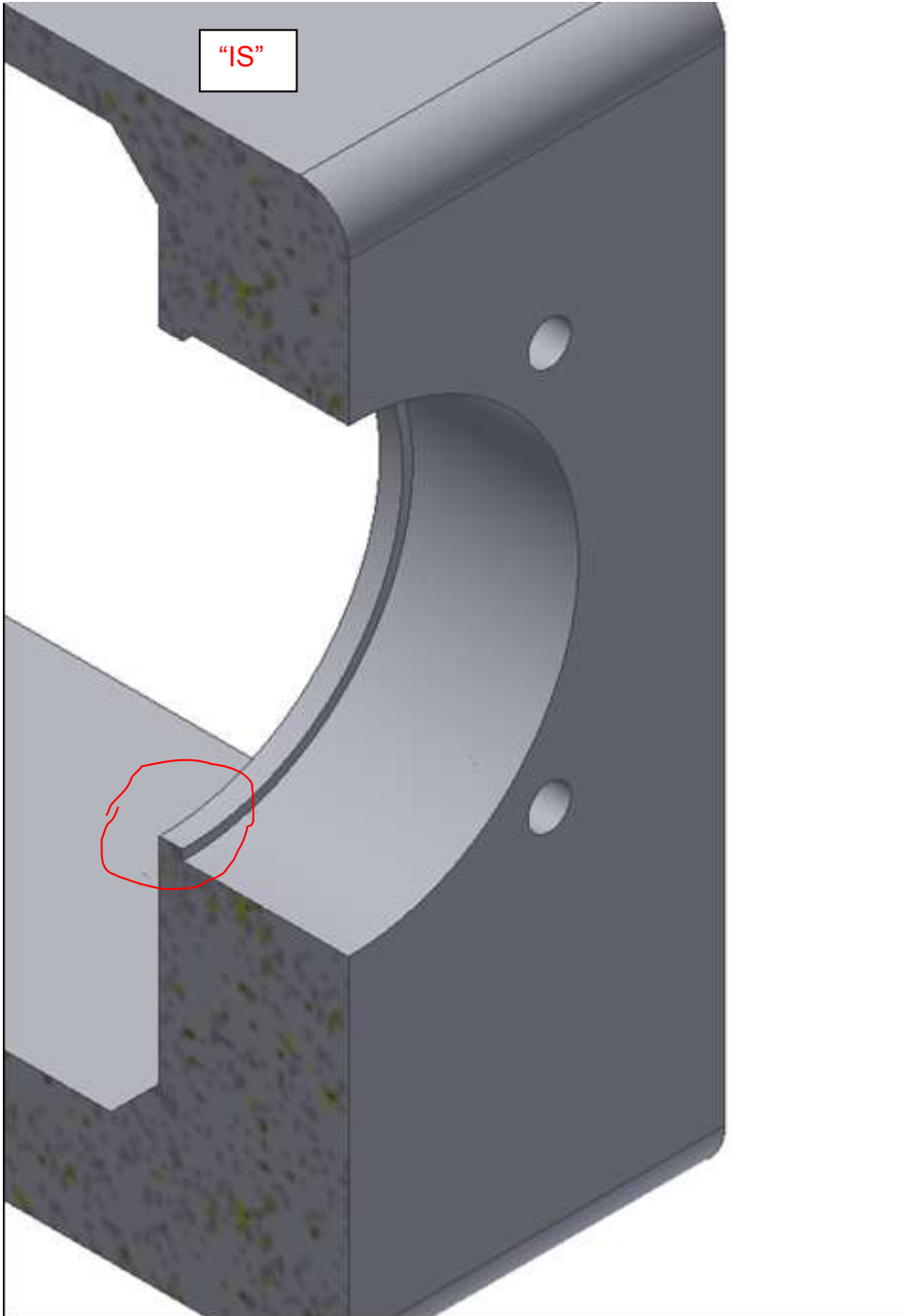


FIG 3

“WAS” The old style crankcase, (no longer available) and snap ring, 70-0400. Drawing M2065 is no longer used for Production, The drawings has been superseded by 70-3000M.

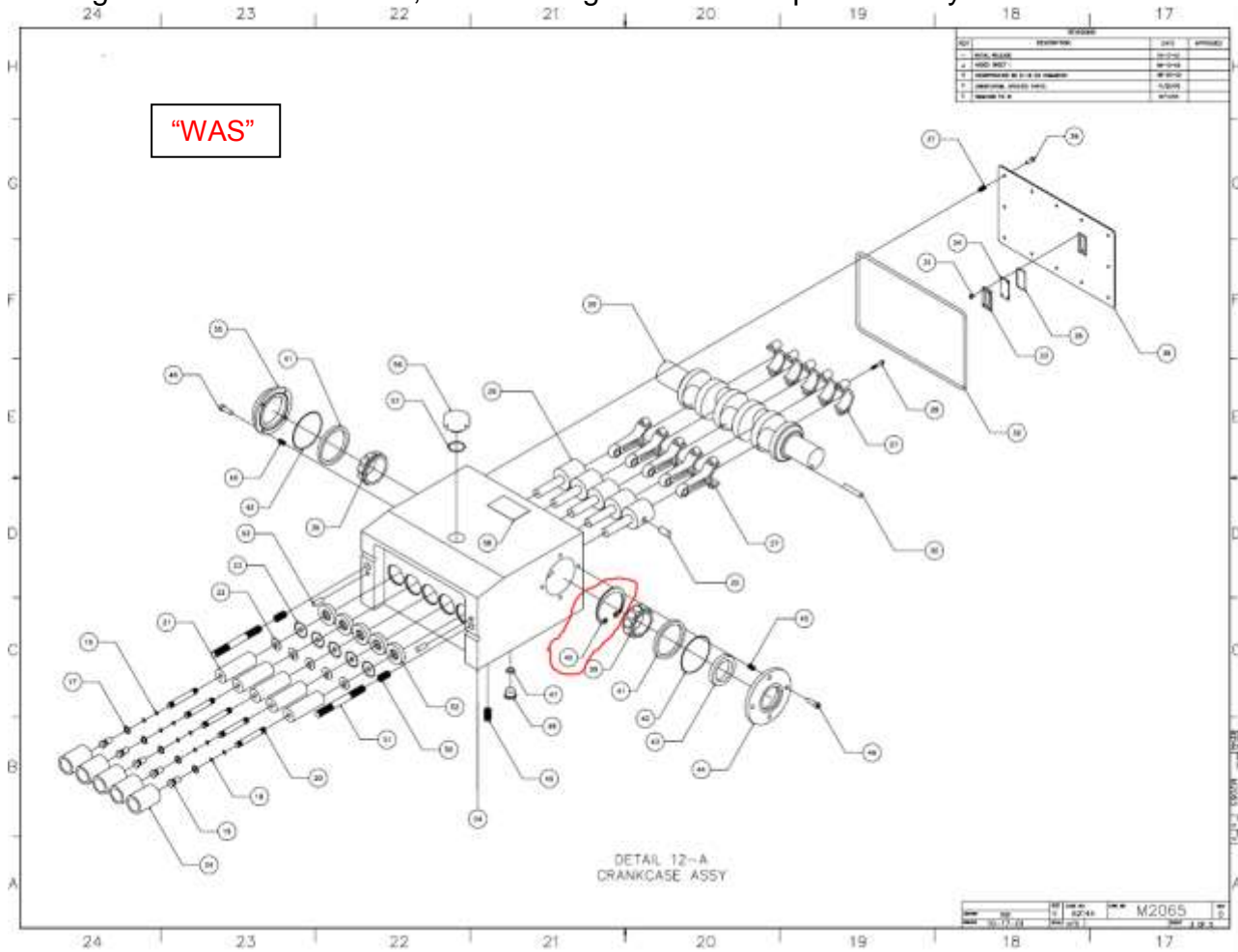
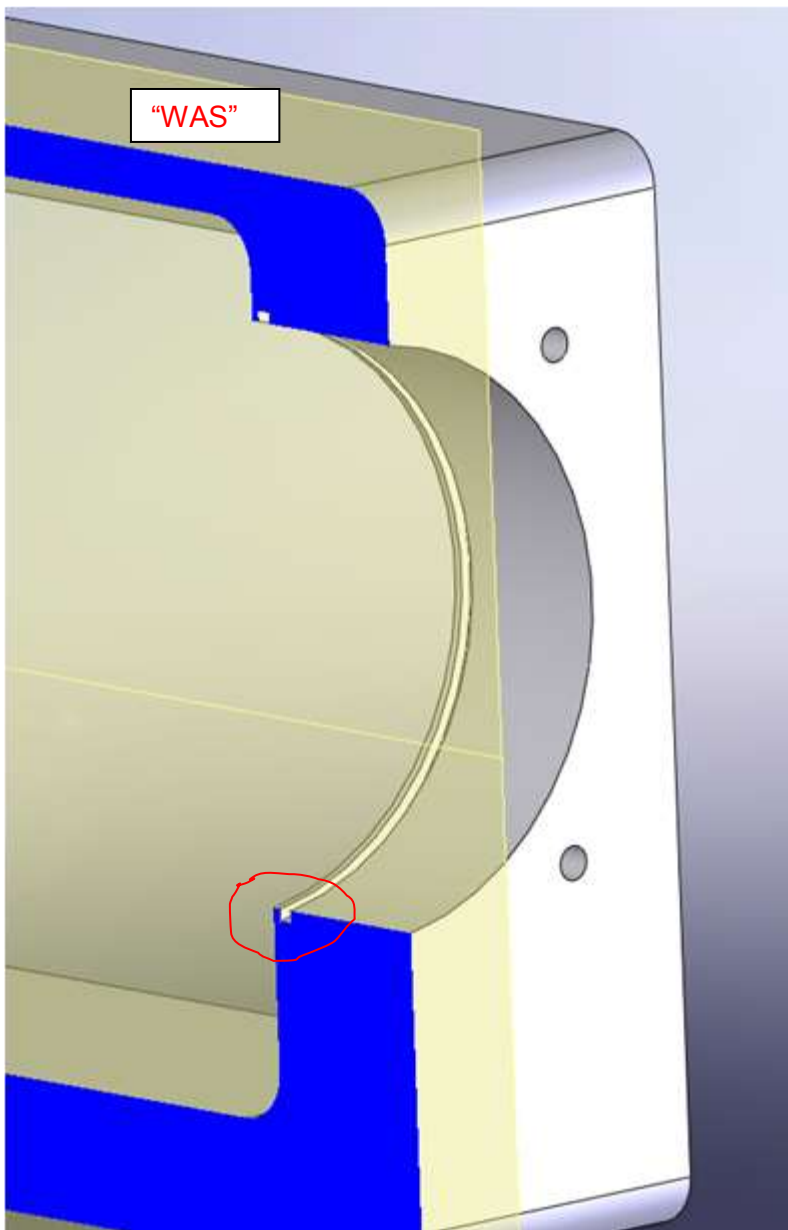


FIG. 4  
"WAS" Section view of old style crankcase with snap ring groove.



The affected population of pumps: Change occurred prior to June 2010. A new snap ring is not needed unless the crankcase is being overhauled and the bearings are being replaced.