



# TECHNICAL BULLETIN

TB 004

For Internal Distribution Only

October 1, 2016

**Subject: Membrane Shimming**

## Details:

Based on an evaluation of the membrane, we have discovered that there are some discrepancies in permeate tube length from the temperature changes during shipping and storage.

This technical bulletin explains how to install a spacer. If the length of the permeate tube is shorter than specified, the distributor or technician can cut a 1" PVC inner diameter pipe and add it to each membrane vessels assembly on the feed port.

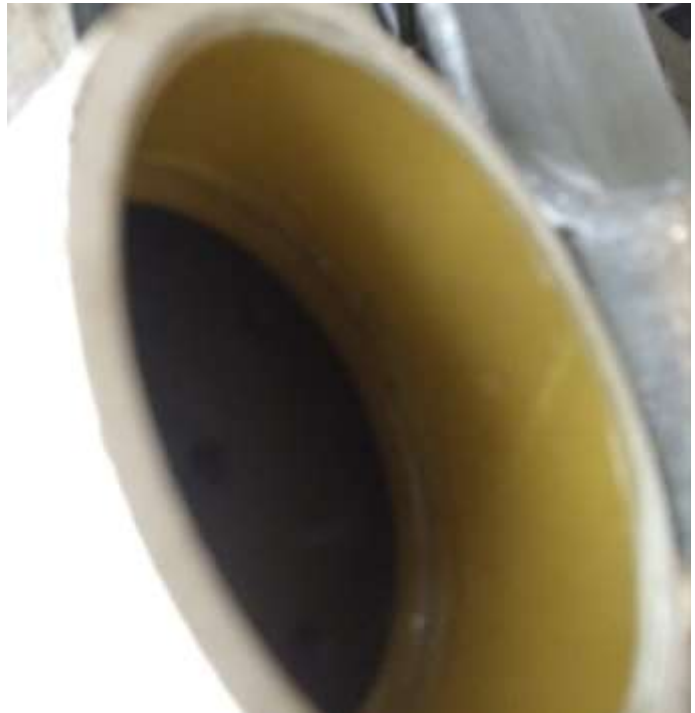
See attached photos for shimming a Parker single element 6" SWRO vessel.

This vessel and membrane required two shims for tight installation.

Use the picture as guide and the video.

Examples spacers:

Example of an unfilled space:



After adding the spaces





Reference:



IMG\_0739.MOV