

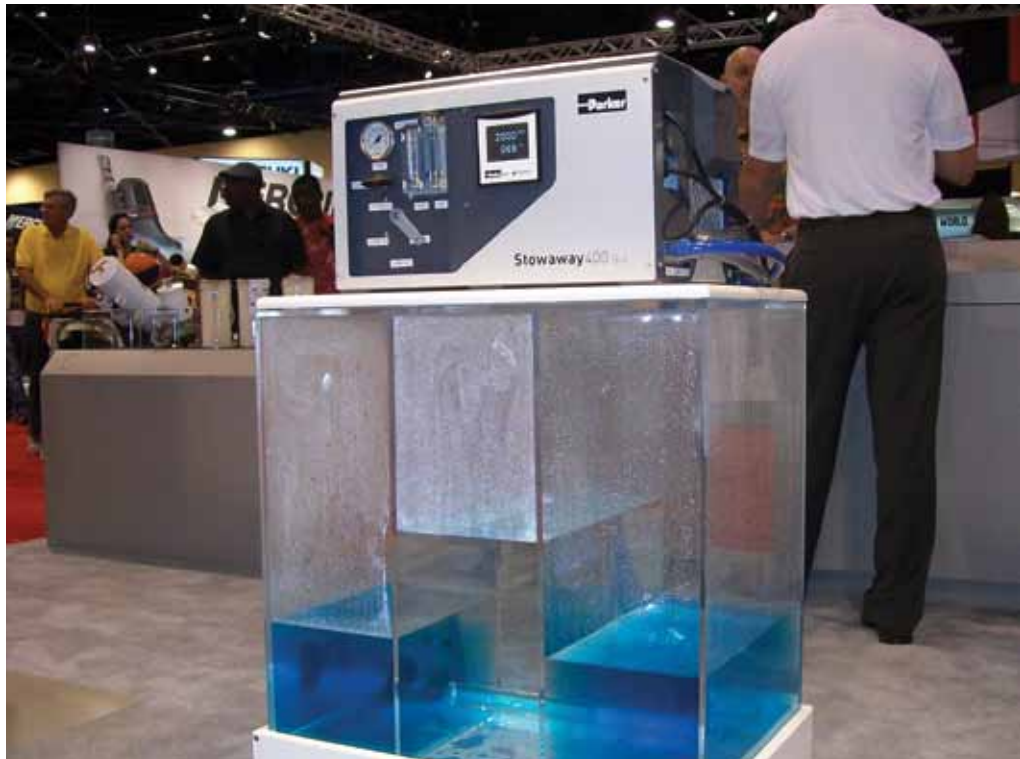
Watermaker Display & Demonstration Tank Racor Village Marine

Technical Application Publication



Display Demo Tank

Make your trade show booth stand out with the Racor Village Marine watermaker display and demonstration tank. This eye catching display tank allows the watermaker to be operated in a way that will help distributors to showcase the features and benefits of our reverse osmosis products. Customers love to see it operate and gives them a hands-on experience. Read the following to help you to set-up your display at trade shows and showrooms.



Contact Information:

Parker Hannifin Corporation
Racor Division/Village Marine Tec.
2630 E. El Presidio Street
Carson, CA 90810

phone 310 516 9911
fax 310 538 3048
racor@parker.com
www.villagemarine.com

www.parker.com/racor

Features and Benefits:

- Give better tutorials to the customer and demonstrate the ease of use with a working unit.
- Explain the brine flow with striking contrast to the feed flow, as the tanks are separated by the crystal clear product water tank.
- Demo that encompasses function with beautiful design and ease of setup.
- Use at trade shows or in your showroom.



ENGINEERING YOUR SUCCESS.

Display Tank - Acrylic, 30" x 30" x 20"

Demo Tank Set Up Procedure

You will need:

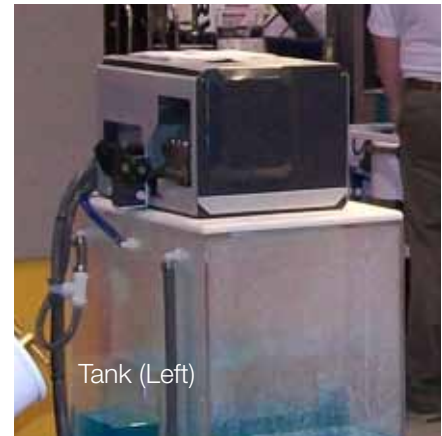
- 2 ea Element, SW 2519 # 33-2519
- 1 ea Demo tank built per drawing # M4400 (customer supplied)
- 1 ea Racor - Village Marine Tec. Watermaker # 90-8293
- 1 ea 20 Amp 125 Volt 2500 Watt NEMA approved 3 wire grounding plug (customer supplied)
- 1 ea Manual fresh flush kit # 90-0215
- 15 ft 3/4" hose # 30-0262
- 5 ft 1/2" hose # 30-0260
- 5 ft 3/8" hose # 30-0258
- 6 ea 3/4" hose clamp # 30-0152
- 5 ea 1/2" hose clamp # 30-0333
- 1 ea Elbow 3/4" MNPT X 3/4" Hose barb #30-0441
- 1 ea Elbow 3/4" MNPT X 1/2" Hose barb #30-0656
- 1 ea Elbow 3/4" MNPT X 3/8" Hose barb #30-0077
- 1 ea 4 lbs. non-iodized salt (customer supplied)
- 1 ea Food-grade food coloring of choice (customer supplied)
- 1 ea Pipe cap # 90-0715

To set up display:

- Place tank on level ground
- Connect Manual fresh flush kit # 90-0215 to a fresh water source
- Add 4 lbs of non iodized salt to outside tanks only
- Fill tank with carbon filtered fresh water, via the fresh flush kit, to fill line
- Screw elbow # 30-0441 into inlet port of tank
- Screw elbow # 30-0077 into product port in tank
- Screw elbow # 30-0656 into



- discharge port in tank
- Place boost pump and 5 micron pre-filter housing on ground behind tank
- Connect 3/4" hose and clamps from "inlet" of tank to the 3/4" hose barb fitting on the suction side of the boost pump
- Connect 3/4" hose and clamps from outlet of boost pump to inlet of 5 micron pre-filter
- Connect 3/4" hose and clamps from outlet of 5 micron pre-filter to watermaker "inlet"
- Connect 1/2" hose and clamps from "reject" of watermaker to "discharge" of tank
- Connect 3/8" hose and clamps from "product" of watermaker to "product" of tank
- Cap and clamp the 1/2" hose barb fitting on the suction side of the boost pump
- Wire watermaker with 20 Amp 125 Volt 2500 Watt NEMA approved straight blade plug. Follow manufacturer's instructions for connection to the watermaker
- Plug in watermaker to 20 Amp 110

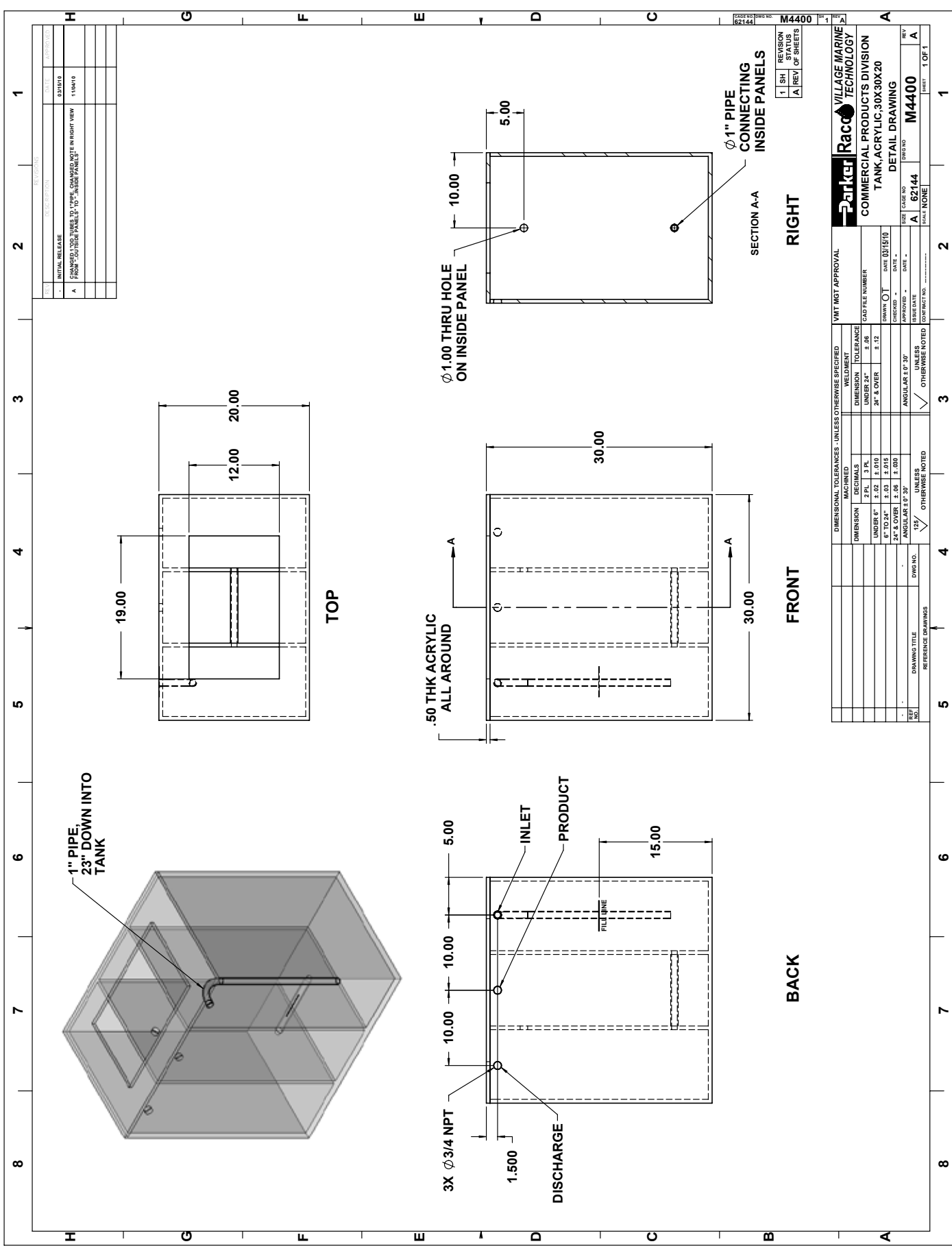


- Volt Receptacle
- Run watermaker per operations manual
- Refilling of the outside tanks may be necessary as the watermaker fills the product tank. Refill with carbon filtered fresh water to fill line as necessary
- Add food coloring of your choice to the outside tanks for contrast

Points of Interest:

- Customers can visually see how clean the center tank "product water" is.
- Point out how quiet the unit is and that it would not be audible with the generator running.
- Allow the customer to operate the unit, showing ease of use.
- Enlighten your customer that the unit can be run from the remote controller confidently. You may or may not have set up the remote controller for remote operation.
- Demonstrate how the pressure doesn't waiver when you turn the unit on and off under pressure.
- Allow the customer to place their hands on the unit to illustrate how smooth the unit operates.

To maintain peak performance always use genuine Parker Racor Village Marine replacement parts. We reserve the right to change our specifications or standards without notice.



REV	DESCRIPTION	DATE	BY	CHKD
1	INITIAL RELEASE	03/20/10		
A	CHANGED 1"00 THRU HOLES TO 1" PIPE, CHANGED NOTE IN RIGHT VIEW FROM "ON INSIDE PANEL" TO "INSIDE PANEL"	11/04/10		

Ø1.00 THRU HOLES NO. 62144	M4400
1 SH	REVISION
A REV	OF SHEETS

COMMERCIAL PRODUCTS DIVISION TANK, ACRYLIC, 30X30X20 DETAIL DRAWING	
SIZE	CASE NO.
A	M4400
DWG NO.	REV
A	1
SCALE	SHEET
NONE	1 OF 1

DIMENSIONAL TOLERANCES - UNLESS OTHERWISE SPECIFIED		WELDMENT	
MACHINED	DECIMALS	DIMENSION	TOLERANCE
2" & OVER	± .015	UNDER 2"	± .015
1" TO 2"	± .010	2" & OVER	± .012
3/4" TO 1"	± .008	24" & OVER	± .006
3/8" TO 3/4"	± .006	ANGULAR ± 0° 30'	UNLESS OTHERWISE NOTED
1/8" TO 3/8"	± .005	ANGULAR ± 0° 30'	UNLESS OTHERWISE NOTED
1/16" TO 1/8"	± .003	125/	UNLESS OTHERWISE NOTED

DRAWING TITLE		DWG NO.	REV
REFERENCE DRAWINGS			
VMT MGT APPROVAL		DATE	DATE
DRAWN BY		DATE	DATE
CHECKED BY		DATE	DATE
APPROVED BY		DATE	DATE
CONTRACT NO.			